

# SmarterMeasure™

## Learning Readiness Indicator



SmarterMeasure is a web-based assessment that measures non-cognitive attributes, technical skills, and readiness for online/self-regulated learning. It can be given to students in the admissions process or as part of an FYE/Orientation course.

It is a vital component in proactive assistance and improving retention. Students receive a detailed report of their results with positive reinforcement & helpful resources. Advisors can view the student reports to make advising much more personal & efficient. Faculty are able to more quickly identify at-risk students. Institutions can use the data in aggregate to identify gaps in resources, trends among students, & predictive correlations to student success factors.

**11%** In failure rates in  
**REDUCTION** online courses

**MORE THAN**  
**4.8** learners have taken  
**MILLION** the Learning  
Readiness Indicator

## Measures eight components of learning readiness

- Life Factors
- Individual Attributes
- Learning Styles
- Technical Competency
- Technical Knowledge
- On-Screen Reading Rate & Recall
- Typing Speed & Accuracy
- LMS Competency

## BENEFITS



### INTUITIVE

Integrates easily into third party technologies; clean & simple user interface, tutorials & learning resources.



### DIAGNOSTIC & PRESCRIPTIVE

Comprehensive assessment reporting & personalized feedback accurately identifying strengths and weaknesses along with providing resources for support & improvement.



### PIONEER

The first readiness assessment to market, widely adopted and trusted; industry leader in non-cognitive readiness assessments.

# MRI

(Math Readiness Indicator)

Measures five areas of basic math skills on a college level

- Numbers
- Algebra
- Geometry
- Modeling
- Technology

# WRI

(Writing Readiness Indicator)

Measures five areas of basic writing skills on a college level

- Grammar, usage and style
- Structure of academic writing
- Writing apprehension

## Student View

**SmarterMeasure**  
writing readiness indicator

SmarterMeasure is an assessment that measures learner readiness. SmarterMeasure is primarily an indicator of the degree to which distance learning will be a good fit for you but it is also a good indicator for your readiness in a traditional classroom setting as well. The purpose of this assessment is to help you prepare to be successful as a student and help LUMA plan resources for your success. You are not penalized for guessing on SmarterMeasure, please enter an answer for each question on the assessment. Upon completion of SmarterMeasure you will receive a score report which will not only help you understand your strengths and opportunities for improvement, but will also provide resources to help you succeed. SmarterMeasure this assessment is strictly for your benefit. Take the time to rate yourself honestly.

**SmarterMeasure Resources**

- Technical Requirements**  
Learn about the minimum computer requirements for taking SmarterMeasure.
- SmarterMeasure Help Desk**  
Let our help desk assist you with any technical issues you are experiencing while taking SmarterMeasure.
- What is SmarterMeasure?**  
Learn more about what this assessment measures and how it will help you become successful as a student.
- Privacy Information**  
Your privacy is taken seriously, read our policy for more information on what we collect.

**Questions about how to login?**

**First Time User Login**  
Use this option if you are a first time user or need to start a new assessment.  
Login as First Time User

**Returning Users**  
Use this option if you want to log up a previously started or completed assessment.  
Login as Returning User

**Sample Student**

**Assessment Summary**  
A summary of your assessment has been provided below. For your expanded assessment results you may click each menu item to the left for additional information.

**Introduction**

**Life Factors**

**Individual Attributes**

**Learning Styles**

**Reading Rate & Recall**

**Technical Competency**

**Typing Speed Accuracy**

**Strength**

**Opportunity for Improvement**

**Learning Styles**

100%  
80%  
60%  
40%  
20%  
0%0% Factors Personal Attributes Tech Competency Tech Knowledge Reading Recall

Visual, 31%  
Phonics, 8%  
Kinesthetic, 8%  
Tactile, 8%  
Auditory, 8%  
Reading Recall, 8%  
Social, 13%  
Logical, 13%  
Verbal, 13%

1 Your primary learning styles are Logical, and Social.

**Sample Student**

**First Download Report**

**Email Report**

**Introduction**

**Life Factors**

**Individual Attributes**

**Learning Styles**

**Reading Rate & Recall**

**Technical Competency**

**Typing Speed Accuracy**

**Strength**

**Opportunity for Improvement**

**Time Management**  
Consider how many expectations regarding attendance and/or participation. However, a significant amount of time is still required each week for reading course material. Your score indicates that time management is not a problem for you. However, it is recommended that you plan for a specific number of hours each week to work on course assignments.

**Level of Control**  
Level of Control is a measure of the degree to which you are in control of what happens to you. A person with high internal locus of control believes that their experiences are controlled by their own will or efforts. Your score indicates a moderate degree of degree of control. This may mean you having feelings that regardless of your efforts, your grade will mostly be determined by how much the teacher likes you or not. You are encouraged to periodically discuss your performance in the course with your faculty member.

**Resources for Support**  
A number of resources exist on the World Wide Web. These listed here are just a small sample of what is available in terms of information on keywords on the topics featured on SmarterMeasure. Some of these sites are the the require a subscription fee. To find more or different information beyond these sites, feel free to perform your own web search.

- Goal Setting
- Motivation - "The Death Curse"
- Attention
- Motivation
- How to Stop Procrastinating
- 101 Time-Test Procrastination
- Learning Styles
- Study Skills
- Mastering Your College Experience
- Study Tip: Make Study Strategies
- Test Anxiety - Strategies To Help You Succeed
- Time Management
- Understanding & Conquering Procrastination
- How to Study
- Study Skills Help Information

**Previous Section** **Next Section**

## Administrative View

**SmarterMeasure**

**Dashboard** **Manage Account** **Analytics** **Resources** **SmarterServices Reports** **Logout**

**Readiness Ranges**

Section	N	High Readiness	Medium Readiness	Low Readiness
Life Factors	468	38	133	228
Individual Attributes	444	20	256	168
Personal History	378	8	8	370
Reading Rate & Recall	39	17	36	6
Technical Competency	440	190	127	123
Technical Knowledge	432	62	333	90

**Graphical Distribution**

100%  
80%  
60%  
40%  
20%  
0%  
0% Factors Personal Attributes Tech Competency Tech Knowledge Reading Recall

**SmarterMeasure**

**Account Details**

Account: All accounts

Administrative Login: All logs

Assessment Group: All assessment-groups

**Status**

High

Updated

**Readiness Factors**

Results Standard: greater than 20%

**Assessment Started**

**Assessment Completed**

**Student Details**

Apply Filter **Cancel**

22,724 results Filter

**Jessica Lorena Pierez Go**  
Expires on Auto Virtual Test: #PS371718

**Veronica De la Pajra**  
Expires on Auto Virtual Test: #PS371712

**María Alma Velazquez B**  
Expires on Auto Virtual Test: #PS371711

**Belen Ayala Garibay**  
Expires on Auto Virtual Test: #PS371706

**Yazari Diosdada Alvarez**  
Expires on Auto Virtual Test: #PS371707

**SmarterMeasure**

**Dashboard** **Manage Account** **Analytics** **Resources** **SmarterServices Reports** **Logout**

**Demographic Analytics**

**Gender Distribution**

**Online Courses Taken**

**Age Range Distribution**

## What Students Have to Say About SmarterMeasure

“My reading rate & recall score wasn’t too good, so I implemented some new habits which *helped me improve my test scores* over the past few weeks.”

“SmarterMeasure indicated that I may struggle with procrastination and time management. So over the course of this term I used one of the suggestions for improvement and started using the calendar on my phone as a way to keep track of assignment due dates. I have even turned in a few assignments early. These changes have been tough, *but I am seeing the benefits of these strategies.*”

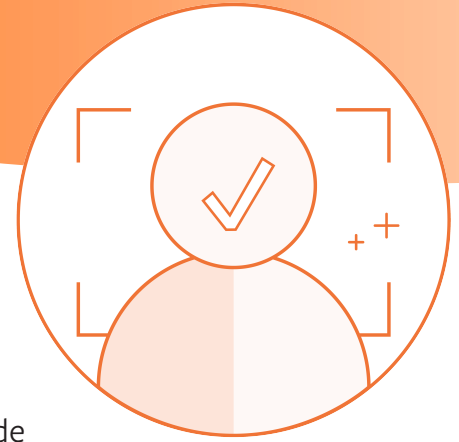
To learn more or schedule an obligation free demo, email or call today.

877.499.SMARTER (7627)  
info@smarterservices.com

www.smarterservices.com/solutions/smartermeasure

# SmarterID

## User Authentication System



SmarterID is a user authentication system that uses facial recognition technology to validate identity & document attendance. It can be used inside SmarterProctoring or as a standalone application. Due to federal regulations with financial aid, institutions must be actively verifying students' identities. In online courses, that is difficult to do since student rarely come to campus. SmarterID requires no change in delivery method or modifications to course design. Schools can choose the security level that best suits their objective. Identity is validated in both modes, however, the "validate ID" option can be turned off and allowing students to only use their webcam.

### BENEFITS



Provides deterrent & helps prevent cheating on project-based learning & exams



Standardizes identity practices for online students



Empowers faculty to identify suspicious behavior



Meets federal aid regulations by verifying attendance



Protects from costly fines associated with cheating scandals

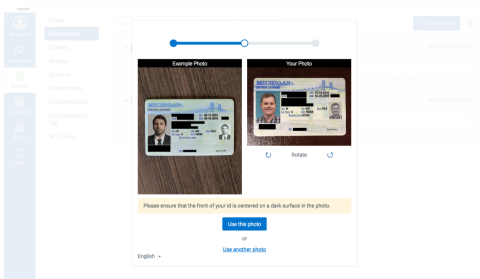


Keeps promise of academic integrity

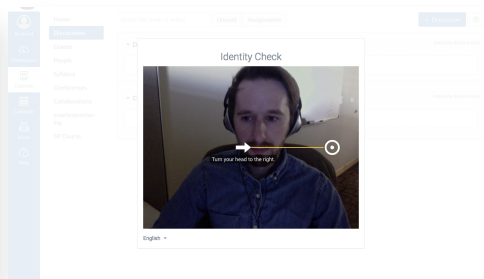
# FEATURES

- Instant flagging and alerts of suspicious activity
- Robust reporting including detailed user activity report
- Customizable per course
- Unique liveness check and spoof detection
- Provides two levels of security from which schools can choose
- Seamlessly integrates with LMS

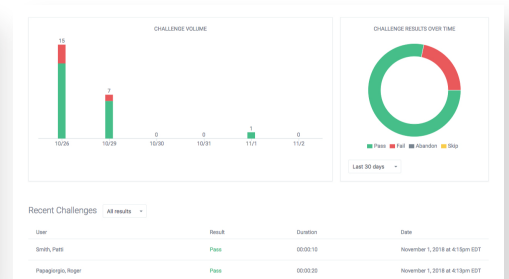
### Student ID Verification



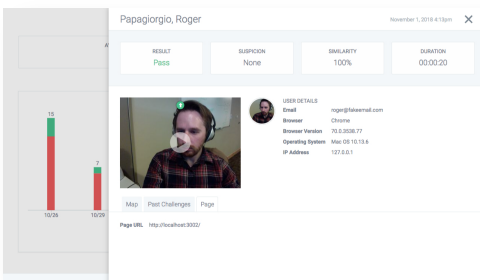
### Student Challenge



### Instructor Admin Dashboard



### Instructor Admin Challenge Detail

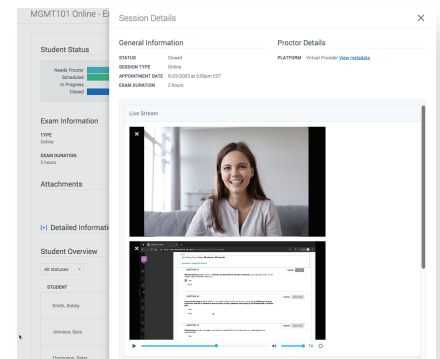


### Instructor Admin Report

Reports: Roster

Name	Verified	Face Match	Challenge	Passed	Failed	Abandoned	Skipped	Last Challenge	Last Seen
Richards, Vic	✗	✗	48	2	14	0	0	10/31/2018	10/31/2018
Somersley, Mitch	✓	✓	3	2	0	1	0	4/12/2018	4/12/2018
Toboggan, Matthew	✗	✗	16	0	0	0	0	10/31/2018	10/31/2018
McPhyfe, Liam	✗	✗	6	0	0	0	0	10/31/2018	10/31/2018
Johnson, Bruce	✓	✓	29	0	0	12	0	11/1/2018	11/1/2018
Reynolds, Dan	✓	✓	45	1	2	0	0	10/31/2018	10/31/2018
Allen, Owen	✓	✓	356	80	21	395	0	4/11/2018	4/11/2018
Papagiorgio, Roger	✓	✓	16	1	0	0	0	11/1/2018	11/1/2018
McGraw, Tim	✓	✓	40	2	1	33	0	10/26/2018	10/26/2018
Smith, Paris	✓	✓	3	0	0	0	0	11/2/2018	11/2/2018

### Integrated Session Reviewing



To learn more or schedule an obligation free demo, email or call today.

877.499.SMARTER (7627)  
[info@smarterservices.com](mailto:info@smarterservices.com)

## SmarterMeasure™



Hi, my name is Megan. The SmarterMeasure learning readiness assessment was my first assignment in my orientation course. My best friend goes to a different college and she took it as an admissions requirement. We both learned a lot about ourselves from the student report. It gave me suggestions on how to improve my time management skills, identified my predominant learning style as visual, validated my strong technical skills, and connected me to a study skills workshop offered by my school. It helped build my confidence and now I feel better prepared to handle my courses.

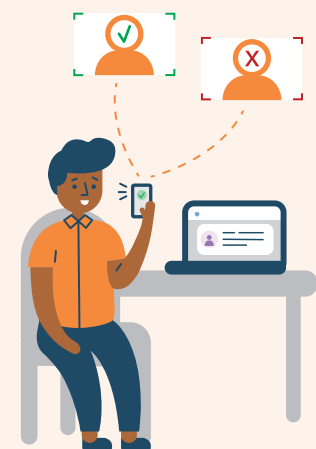
Hi I'm Dr. Adkins, I'm a professor at a local college. Meet some of my students!



## START

## SmarterID

I'm Taylor, what's up? I first encountered SmarterID when I logged into my online course and was taken through an easy 2-step enrollment process. After that, an authentication check popped up on my screen when I clicked on my assignment and then again when I took my first quiz. It was simple to move my head from side to side following the arrow and didn't cause me any interruption whatsoever. I really appreciate the fact that my school takes cheating seriously and has tools in place to protect academic integrity. I want my degree to be well respected for years to come!

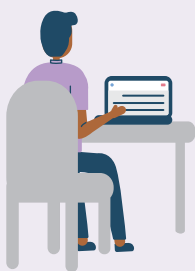


## SmarterProctoring™

Hello there! I am Anna and this is my best friend Miller. We are both taking the same online math course and have been helping each other study because we have similar learning styles. We are required to have our math mid-terms and finals proctored and our school lets us choose the proctoring option that's best for us. I prefer to go to the testing center at the college and have my instructor be my proctor. But Miller is more comfortable taking tests at home so he prefers the live-online proctoring provider our school has chosen. I appreciate the flexibility my school offers allowing me to choose what works best for me.

### Online Proctoring

### Face to Face Proctoring



# Who is SmarterServices?

SmarterServices is a group of dedicated educators who just happen to work at a software company. We have chosen to work as facilitators of products & services that assist students in obtaining an education to make their life better. We have served over 600 institutions and 10 million students since the birth of our company in 2002. SmarterServices continues to create & improve cost-effective solutions through our partnership with colleges & universities across the country. We work very closely with schools who have FYE/Orientation courses and/or online programs. Partnering with advisors, student-success coaches, online learning directors, accrediting teams, test center admins, and faculty senates, the SmarterServices team knows, understands, and has a true love for higher education.

## SmarterMeasure™



### Measures eight components of learning readiness

- Life Factors
- Individual Attributes
- Learning Styles
- Technical Competency
- Technical Knowledge
- On-Screen Reading Rate & Recall
- Typing Speed & Accuracy
- LMS Competency

### Benefits



**Diagnostic & Prescriptive**



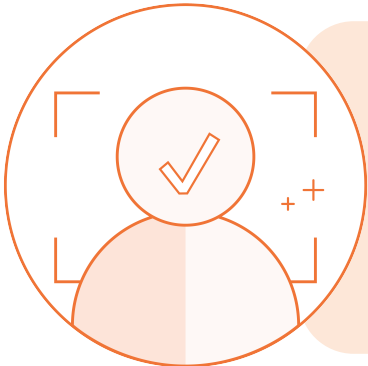
**Intuitive & Resourceful**



**Completely Customizable**

\*Very effective when embedded in Orientation/FYE course.

## SmarterID



Provides deterrent & helps prevent cheating on project-based learning & exams



Standardizes identity practices for online students



Empowers faculty to identify suspicious behavior



Meets federal aid regulations by verifying attendance



Protects from costly fines associated with cheating scandals



Keeps promise of academic integrity

## SmarterProctoring™



**40% REDUCTION**

In administrative burden



Access to global network of testing centers and proctoring professionals



Seamlessly integrates with LMS displaying all proctoring activities & tasks including online & paper-based testing



Cost-effective solution that reduces spending for institutions on multiple proctoring systems



Streamlined proctor approval process eliminating outdated paper forms

## SmarterMeasure™



Hi, my name is Megan. The SmarterMeasure learning readiness assessment was my first assignment in my orientation course. My best friend goes to a different college and she took it as an admissions requirement. We both learned a lot about ourselves from the student report. It gave me suggestions on how to improve my time management skills, identified my predominant learning style as visual, validated my strong technical skills, and connected me to a study skills workshop offered by my school. It helped build my confidence and now I feel better prepared to handle my courses.

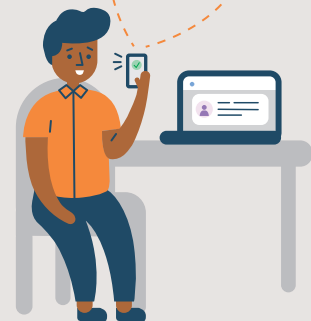
Hi I'm Dr. Adkins, I'm a professor at a local college. Meet some of my students!



## START

## SmarterID

I'm Taylor, what's up? I first encountered SmarterID when I logged into my online course and was taken through an easy 2-step enrollment process. After that, an authentication check popped up on my screen when I clicked on my assignment and then again when I took my first quiz. It was simple to move my head from side to side following the arrow and didn't cause me any interruption whatsoever. I really appreciate the fact that my school takes cheating seriously and has tools in place to protect academic integrity. I want my degree to be well respected for years to come!

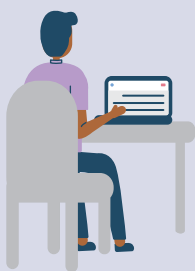


## SmarterProctoring™

Hello there! I am Anna and this is my best friend Miller. We are both taking the same online math course and have been helping each other study because we have similar learning styles. We are required to have our math mid-terms and finals proctored and our school lets us choose the proctoring option that's best for us. I prefer to go to the testing center at the college and have my instructor be my proctor. But Miller is more comfortable taking tests at home so he prefers the live-online proctoring provider our school has chosen. I appreciate the flexibility my school offers allowing me to choose what works best for me.

### Online Proctoring

### Face to Face Proctoring



# Who is SmarterServices?

SmarterServices is a group of dedicated educators who just happen to work at a software company. We have chosen to work as facilitators of products & services that assist students in obtaining an education to make their life better. We have served over 600 institutions and 10 million students since the birth of our company in 2002. SmarterServices continues to create & improve cost-effective solutions through our partnership with colleges & universities across the country. We work very closely with schools who have FYE/Orientation courses and/or online programs. Partnering with advisors, student-success coaches, online learning directors, accrediting teams, test center admins, and faculty senates, the SmarterServices team knows, understands, and has a true love for higher education.

## SmarterMeasure™



### Measures eight components of learning readiness

- Life Factors
- Individual Attributes
- Learning Styles
- Technical Competency
- Technical Knowledge
- On-Screen Reading Rate & Recall
- Typing Speed & Accuracy
- LMS Competency

### Benefits



**Diagnostic & Prescriptive**



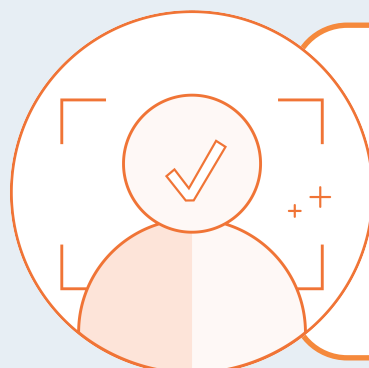
**Intuitive & Resourceful**



**Completely Customizable**

*\*Very effective when embedded in Orientation/FYE course.*

## SmarterID



Provides deterrent & helps prevent cheating on project-based learning & exams



Standardizes identity practices for online students



Empowers faculty to identify suspicious behavior



Meets federal aid regulations by verifying attendance



Protects from costly fines associated with cheating scandals



Keeps promise of academic integrity

## SmarterProctoring™



**40%  
REDUCTION**

In administrative burden



Access to global network of testing centers and proctoring professionals



Seamlessly integrates with LMS displaying all proctoring activities & tasks including online & paper-based testing



Cost-effective solution that reduces spending for institutions on multiple proctoring systems



Streamlined proctor approval process for all users eliminating outdated paper forms