

Education is the most  
**POWERFUL WEAPON**  
which we can use to change the world

Nelson Mandela "Lighting your way to a better future" 16<sup>th</sup> July 2003

#olcaccelerate

#elearnready



ONLINE LEARNING™  
CONSORTIUM



# eLearnReady 1 & 2: Let's Prepare Both Students & Faculty for High Quality Online Learning Environments

Sherri Restauri, Corey Lee  
Coastal Carolina University

Cheryl Fulghum  
Haywood Community College

# Project Background-Phase 1

- High attrition rate in online courses
- Students not prepared to take online learning courses
- Support and prepare students to take an online class by determining their level of readiness
- Provide guidance to faculty on student composition by class
- Improve learning resources and support for online learners (accreditation requirement)

# Project Goals

- Assess & improve student readiness to take a distance learning course.
- Improve student satisfaction and retention in online courses.
- Identify factors associated with student success, satisfaction and retention in online courses & provide relevant student-support resources.
- Provide recommendations for faculty to assist students with low online course readiness factors.

# Variables Identified

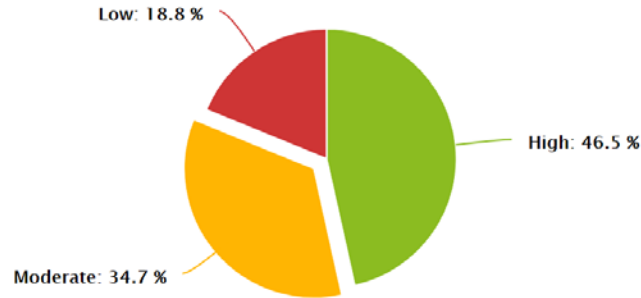
# Factors of Student Persistence

1. Self-Motivation
2. Self-Management
3. Feedback
4. Interaction
5. Reading

## Nine Dimensions in Student's eLearnReady Profile

### Dimension 1: Self-Motivation

Student Score Distribution (N = 43)

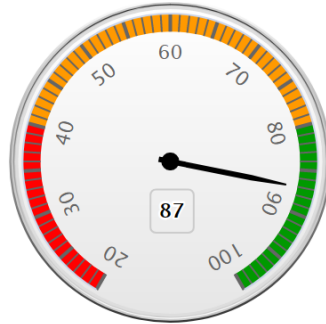


Motivation is an issue in traditional classrooms, and it does not exclude online learning. Online courses create a learner directed environment. How do students motivate themselves in an online learning environment? In online classes, the instruction will not happen to the students, they have to help create the learning experience for themselves. Learners can motivate themselves through an

# Factors of Student Persistence

- 6. Reading
- 7. Listening
- 8. Technology
- 9. LMS

## Self-Motivation



This dimension measures your motivation level for this course. The maximum possible score for this dimension is 100 and you score a total of **87 (high)**, indicating you understand the connection between your coursework and your long-term goals. You plan ahead. You devote significant time and resources to accomplish tasks. Your level of motivation helps you overcome difficulties and obstacles to complete your goals. Others view you as an organized leader. The following tips could help you maintain high level of motivation.

### Study Tips

- Make sure to read the syllabus. Knowing what is expected of you will help you reach your goal.
- Finding a study buddy will help you understand course work. You can help each other stay motivated.
- Procrastination will cause work to pile up, you to feel overwhelmed, and you may lose motivation. Plan ahead, so you can be successful!

## eLearnReady System: Easy Steps 1 – 2 – 3



When students are taking the eLearnReady assessment survey, they will be directed to a [survey page](#), which is smartphone friendly, and contains 43 items. This survey is designed to analyze students' degree of readiness for participating in online courses. Based upon research and statistical analysis, a total of nine salient and measurable factors were identified that include: 1) Self-Motivation, 2) Self-Management, 3) Feedback, 4) Interaction, 5) Reading: Visual Text, 6) Reading: Visual Graphics, 7) Listening, 8) Technology, and 9) Course Management System.



### DASHBOARD

[Login](#) [Forgot your password?](#)

Username or E-mail \*

Password \*

☐ REMEMBER ME



# Key Points of eLearnReady 1

- Assesses *student readiness to success* in an online class
- Provides *individual* as well as *class-wide* collated data
- Data can be *distributed* directly to others (faculty; advisors)
- Data can be collated class-wide and *assessed for intervention* by faculty members
- eLearnReady is a *free tool available to all campuses*
- *Personalization* options available

# Demo and Test Drive

[eLearnReady.com](https://eLearnReady.com)

Student tools:

<https://free.elearnready.com/s/>

<https://free.elearnready.com/assessment-report/>



eLearnReady Assessment System

Page 1

Next (Page 2 of 3)

Next (page 3 of 3)



0% Complete

1 of 3

# Demo and Test Drive

Teacher tools:

[https://free.elearnready.com/  
class-profile/](https://free.elearnready.com/class-profile/)

[https://free.elearnready.com/  
dashboard/](https://free.elearnready.com/dashboard/)



If you are an instructor and want to view aggregated students' responses as a **class profile**, you can **create** an account with this system and generate a survey link specifically for your class. With eLearnReady, you will gain a deep understanding of your students' readiness for the online learning environment and ideas for supporting students' online learning abilities in the form of study tips. Plus, instructors are also offered teaching and communication methods to meet the needs of individual classes.

# Applications

## TABLE OF CONTENTS

- 1 Welcome Letter from Dr. Restauri
- 2 Online Readiness Self-Assessment
- 3 Best Practices for Success in This Online Course
- 4 Online Learning Student Support
- 5 Course Syllabus & Class Poll
- 6 Getting Started PSYCH 420 Quiz
- 7 Sign up for Remind!
- 8 Post to the Intro Discussion Forum, & Start Classwork

## COURSE MENU

### Getting Started PSYCH 420 FA17 Syllabus

- Unit 1 Learning Module (Ch 1-3)
- Unit 2 Learning Module (Ch 4-7)
- Unit 3 Learning Module (Ch 8-10)
- Unit 4 Learning Module (Ch 11-13)
- Course Assignments

### Unit 2 Exam Information

### PSYCH 420 Practice Quiz Repository

# Getting Started

## 2 Online Readiness Self-Assessment



eLearnReady is a great tool that has been designed to understand your readiness level for participating successfully in an online course. There are no right or wrong answers to each question, but the questions do reveal which characteristics make you more likely to succeed in an online course.

### Instructions

Please take a few minutes to choose the response that best describes you in the following statements. After submitting this survey, your responses will be analyzed and study tips will be offered for your success for online learning. Please complete this activity before moving on in the Getting Started Module. Take a screenshot of your completed results and save those; they will be used at a later time in our course. Click on the following link to access the [Online Learning Ready Assessment Tool](#).

# Additional applications

- FYE
- Program-entry
- Intro-level courses
- Online students
- Orientation
- Advisory
- Preventative/  
Recommendations
- OL units
  - Master/template  
courses

# Project Background-Phase 2 (eLR 2.0)

- Faculty's lack of familiarity in developing and supporting online course best practices
- Faculty lack of awareness of preparatory skills needed to facilitate online learning
- Support and prepare faculty to teach an online class successfully by determining their level of readiness
- Improve support & training resources and support for online faculty

# Variables Identified?

Grant Funding → Research → Factor Analysis →

*Preliminary Findings*



# Demo and Test Drive

<https://free.elearnready.com/v2/>



13224 Submissions Analyzed | 419 Courses | [About Us](#) | [Contact Us](#)

CUSTOMIZATION

STUDENT SURVEY

Home

Survey

Report

Class Profile

Adoption Ideas

Shared Documents

Dashboard

## eLearnReady Assessment System for Instructor

**Sweepstakes:** Each prize winner (10 winners) will receive a \$50.00 Amazon Gift Card

[Sweepstakes rules](#)

1

2

3

4

# Final Pilot Launch!

**Yay!**

A total of 10 individual \$50.00 Amazon Gift Cards are being distributed to faculty who complete this survey in its' entirety for participation in our pilot survey



# Faculty Applications

- Targeted trainings
- Support
- ID & SME collaborations
- Self-directed improvements
- Freely available resource
- Preventative/ Recommendations
- OL units
- College- and dept-level assessments

# Questions



Sherri Restauri

[srestauri@coastal.edu](mailto:srestauri@coastal.edu)

Cheryl Fulgham

[cfulghum@haywood.edu](mailto:cfulghum@haywood.edu)

Corey Lee

[clee@coastal.edu](mailto:clee@coastal.edu)

# Future Studies

Relationships among:

- Student's eLearnReady Profile:

- Individual Course Satisfaction

- Student Performance/Achievement

- 1.If predictive factors are identified, intervention strategies can be implemented to improve student learning outcomes (performance) and increase student satisfaction level

- 2.Retention issues can be addressed

# Resources on eLR

## Publications

- Abell, N., Cain, M., & Lee, C.Y.C. (2016). Essential Attributes for Online Success: Student Learning Preferences and Faculty Teaching Styles. *International Journal on E-Learning*, 15(4), 401-422.
- Abell, N., Lee, C., Cain, M., & Wulff, H. (2008). Consider Your Style ~ A Customized Self-assessment Tool for Teaching Effectiveness in Online Environments. *E-Learn World Conference on E-Learning in Corporate, Government, Healthcare, & Higher Education*, 2008, 2404-2409.
- Abell, N., Lee, C., Cain, M., & Wulff, H. (2007). Learning Attributes Essential for Online Success: Individualized Metacognitive Strategies for Online Learners. *E-Learn World Conference on E-Learning in Corporate, Government, Healthcare, & Higher Education*, 2007, 589-594.
- Lee, C., Abell, N., Cain, M., & Bender, B. (2006). Learning Attributes Essential Learning Attributes Essential for Online Success: An Instrument for Assessing and Supporting Students. *E-Learn World Conference on E-Learning in Corporate, Government, Healthcare, & Higher Education*, 2006, 701-706

# Resources on eLR

## Presentations

- Lee, C., & Restauri, S. (2017, April). Student Readiness for Online Learning: How Are You Preparing Your Students To Learn Effectively? Paper presented at Online Learning Consortium (OLC) Innovate 2017. New Orleans, LA.
- Lee, C., & Dickerson, J (2015, October). An Automatic Advising System for Assessing and Assisting Online Students. Paper presented at South Carolina Educational Technology Conference (SCEDTC) 2015, North Charleston, SC.
- Lee, C. & Shinaberger, J (2014, September). Supporting Distance Learning Initiatives: Learning Resources and eReadiness Assessment System. Coastal Carolina University's Assessment Day, Conway, SC.
- Shinaberger, JM., Shinaberger, L., & Lee, C. "eLearnReady: A Free Assessment Tool for Determining Student Online Readiness" Presented at ASCUE (Association Supporting Computer Users in Education), North Myrtle Beach, SC, June 2014.
- Lee, C., Shinaberger, J, & Shinaberger, L. (2013, October). eReadiness Assessment System for Online Learners: Helping Students Succeed. Paper presented at South Carolina Educational Technology Conference (SCEDTC) 2013, Greenville, SC.
- Lee, C., Shinaberger, J (2012, October). An assessment system for helping students get ready for online learning. Paper presented at South Carolina Educational Technology Conference (SCEDTC) 2012, Greenville, SC.